



UNIVERSITY OF  
**Southampton**

# WIDENING ACCESS TO MEDICINE RESIDENTIAL

9-11 APRIL 2018  
(BM6)

“The BM6 foundation year was incredibly insightful. It helped build my confidence both academically and socially”.

**Melissa Anane**

BMBS Medicine and BMedSc (BM6)  
Third year

“The small group sizes provide a friendly, supportive cohort of students who all have their own stories to tell. The teaching on BM6 is always of a high standard and the curriculum is really well planned out.

The support from the lecturers is commendable; they provide academic and emotional support which is necessary throughout medical school. The early patient contact also allows you to build confidence with patients that is so essential later on.

As well as being a medical student, I am also involved in the widening access to medicine society (WAMSoc) which allows me to work with prospective medical students from a wide range of backgrounds.

Once qualified, I'd like to specialise in Emergency Medicine. I love the fast pace of A&E, the positive dynamics I've witnessed and the breadth of knowledge required to succeed in it”.



# WIDENING ACCESS TO MEDICINE RESIDENTIAL (BM6)

9-11 APRIL 2018

The University of Southampton is running a 3-day residential for forty Year 12 students, designed to increase the participant's knowledge of the role of doctors and the training they undergo. The residential will provide opportunities to develop interpersonal skills, increase awareness of the undergraduate medical student experience and to support students in their applications to study Medicine.

## What is BM6?

The University of Southampton's BM6 degree programme was established to widen access into the medical profession. It involves studying for an extra year on a specially designed foundation year, or 'year zero', during which you will receive extensive support, before joining year 1 and studying alongside students on the BM5 medical degree programme. The BM6 programme leads to a qualification that allows graduates to register provisionally with the General Medical Council (GMC). Whether you choose to be a physician or a surgeon, a general practitioner or a clinical scientist, or you follow any other path, our BM6 programme represents the first stage in a rewarding career as a doctor.

## Why should I apply for the residential?

Whilst this residential does not guarantee you a place on the BM6 programme it will hopefully prepare you for applying to any Widening Access to Medicine programme. All costs relating to the residential will be met by the University of Southampton, including accommodation, food and activities. The University will also cover travel expenses up to a maximum of £85 (total).

## What does the residential include?

- A two night stay in student accommodation
- A day of activities at Southampton General Hospital
- Clinical skills and other topical sessions
- Sessions on the UKCAT, student finance and completing your application
- Support of a student mentor
- Evening activities
- Travel reimbursement up to £85

## APPLICATION TIMELINE

**25 FEBRUARY  
2018**

Applications close

**9-11 APRIL  
2018**

Widening Access to  
Medicine Residential  
(BM6)

**NOVEMBER 2017**

Speak to a member of staff at your school/college about supporting your application

**4 DECEMBER  
2017**

Applications open

**1 MARCH  
2018**

Successful applicants notified

**MAY –OCTOBER  
2018**

Optional ongoing support through WAMSoc mentoring

## PRAISE FOR THE 2017 WIDENING ACCESS TO MEDICINE RESIDENTIAL

“It was amazing! I discovered so many new things that made me want to study medicine that much more”.

---

“This experience has totally changed my perspective of applying to university and now I’m more hopeful and motivated for the future!”

---

“This experience has made me realise that going long-distance is not as important as securing a place at a great university, even if it’s close to home”.

---

“The residential was incredibly insightful for looking at the life of a medical student. It removed the vagueness of the medical admissions process”.

---

# 99%

of students

who study Medicine at the University of Southampton are in work or further study six months after completing the course\*

\*Unistats

### Am I eligible?

This opportunity is for Year 12 students who want to study Medicine at university and intend to apply through a widening access programme. In order to qualify for the BM6 residential you will need to be studying both A Level Biology and Chemistry and meet at least three of the following eligibility criteria:

- First generation applicant to higher education
- Parents, guardian or self in receipt of a means-tested benefit
- Young people looked after by a Local Authority
- In receipt of a 16-19 bursary or similar grant\*
- In receipt of free school meals at any point in Years 10-12
- Living in an area with a postcode which falls within the lowest 20 per cent of the Index of Multiple Deprivation (please check here: <http://dclgapps.communities.gov.uk/imd/idmap.html>), or a member of a travelling family.

\*Where an applicant chooses the Free School Meals criteria and the 16-19 bursary criteria, the 16-19 bursary must be awarded for something other than Free School Meals. Eg. Transport costs between home and college, text books/stationery/printing.

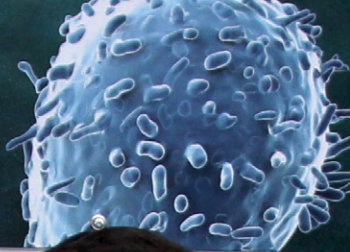
Applicants should normally only submit eligibility criteria relating to one postcode/address. The IMD score will be checked and verified by a member of the Outreach team.

### How do I apply?

You will need to submit your completed application form online by 25 February 2018. We will use the information you provide on this form during the selection process for a place on the residential.

The application form must be supported by a member of staff at your school/college. This could be your personal tutor, subject teacher or another member of staff. Information for teachers can be found on the residential's webpage (see below).

To view or complete the application form, please visit:  
[www.southampton.ac.uk/schools-colleges/widening-access-to-medicine-residential.page](http://www.southampton.ac.uk/schools-colleges/widening-access-to-medicine-residential.page)



“I really appreciate the diversity of the BM6 cohort...”.

**Zain Akhtar**

BMBS Medicine and BMedSc (BM6)  
Second year

“The foundation year confirmed my interest in studying medicine at university. It also gave me the opportunity to gain patient contact at a very early stage through placements.

I really appreciate the diversity of the BM6 cohort as the programme allows you to study with students from a variety of backgrounds. This proved to be a great comfort as there were others in a similar position to me. Studying as part of a small group has allowed me to strengthen my understanding of core topics. The lecturers are also very approachable and supportive.

I also work as a student ambassador where I engage with a wide range of prospective students. This has allowed me to build essential skills such as confidence and organisation that I am able to build into my clinical practice.”





### **Find out more**

[www.southampton.ac.uk/schools-colleges/  
widening-access-to-medicine-residential.page](http://www.southampton.ac.uk/schools-colleges/widening-access-to-medicine-residential.page)

[outreach@southampton.ac.uk](mailto:outreach@southampton.ac.uk)

+44 (0)23 80591810

